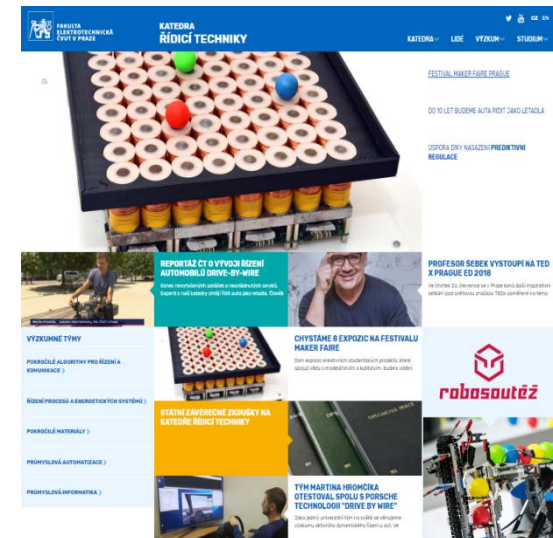


Katedra řídicí techniky Fakulta elektrotechnická České vysoké učení technické v Praze

Michael Šebek
Vedoucí katedry



Delegace na Setkání



Statistika katedry

55 (48) pracovníků: 15 (15) A + 26 (20) NAV

43,4 (36,6) FTE: 13 (13) A + 22 (16) NAV

17 (13) C: všichni A+NAV; v FTE je to 45% (44%) všech A+NAV

18 (17) interní dok: 6 (5) C; 12 (9) s úvazkem - vně jen Hnwl a ČVUT

4 (4) prof, 3 (3) doc, PhD má dalších 16 (11)



údaje za 2018 (2017)

C cizinci NE-Slováci

A akademický pracovník

NAV neakademický výzkumník

A+NAV tvůrčí pracovníci

2017

rozpočet 59 MKč (2,3 M€): projekty 26 MKč,

RVO 26 MKč, smlouvy 4 MKč, výuka 5 MKč

na FTE_{A+NAV} 2 MKč

na FTE_{celk} = 1,6 MKč

Nejdůležitější události a výsledky

Smart Drive Solutions Centre
M. Hromčík a T. Haniš



Advanced Materials Group
roste-prostor? nestěhujeme se! ☹️

Maker Faire® Prague

 Česká televize

 flowee
médiu nového světa

 TEDx Prague
x = independently organized TED event

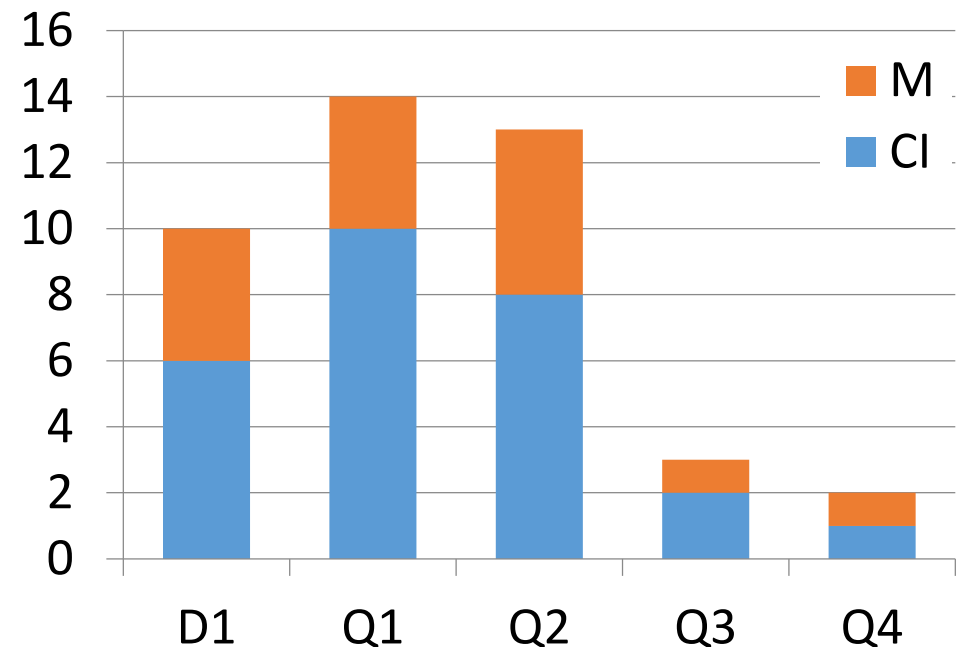


Český rozhlas

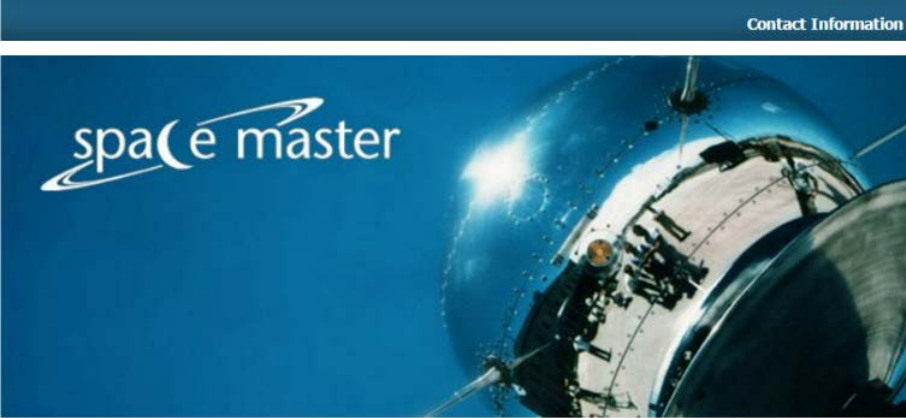


projekty nové 4: 2 OPVV, GAČR, TAČR
za 100 MKČ = 4 M€
celkem běží 15, z toho 4 EU

32 WoS článků







Contact Information

Home
 Current Issues
 Apply to SpaceMaster
 Eligibility
 Selection
 Studies
 Course Modules
 Master's Thesis
 Degrees Awarded
 Scholarships and Costs
 Contact Information
 Useful Links

SpaceMaster - International/Multidisciplinary

Joint European Master in Space Science and Technology,
 120 ECTS in a 2-year degree programme

Consortium of Universities responsible for the SpaceMaster Course:
 Luleå University of Technology (**LUTU**), Kiruna, Sweden (Coordinating University)
 Julius-Maximilians-University Würzburg (**JMÜW**), Germany
 Cranfield University (**CU**), United Kingdom
 Czech Technical University (**CTU**), Prague, Czech Republic
 Aalto University, School of Electrical Engineering (**Aalto**), Helsinki, Finland
 Université Toulouse 3 (**UT3**), France



CORDIS
 Community Research and Development Information

Project ID: 605097
 Funded under: [FP7-PEOPLE](#)

Application of distributed control on smart structures
 From 2013-09-01 to 2017-08-31, closed project

Project details

Total cost: EUR 454 224.69	Topic(s): FP7-PEOPLE-2013-ITN - Marie-Curie Action: "Initial
EU contribution: EUR 454 224.69	Call for proposals: FP7-PEOPLE-2013-ITN
Coordinated in: Czech Republic	Funding scheme: MC-ITN - Networks for Initial Training (ITN)

Objective

"The proposed training program aims at bridging the gap between industry and academia. The motivation comes from the aerospace and automotive industries where light composite structures introduces demands to attractive, weakly damped flexible packed. This will be achieved by a tandem between a high level academic, well established community: CTU in Prague, and the ind..."

Related information

Report Summaries [Periodic Report Summary 1 - ARRAYCON \(Application of distributed control on smart structures\)](#)

Coordinator

CESKE VYSOKE UCENI: TECHNICKE V PRAZE
 ZITKOVA 4
 16526 PRAHA
 Czech Republic

Activity types: Higher or Secondary Education Establishments
Administrative contact: Michael Sebek
 Tel.: +420 224357201
 Fax: +420 224918646
[E-mail](#)

Participants

SIEMENS INDUSTRY SOFTWARE IN

Subjects

[Life Sciences](#)

Share this page
[Twitter](#) [Facebook](#) [LinkedIn](#) [Google+](#) [Email](#)

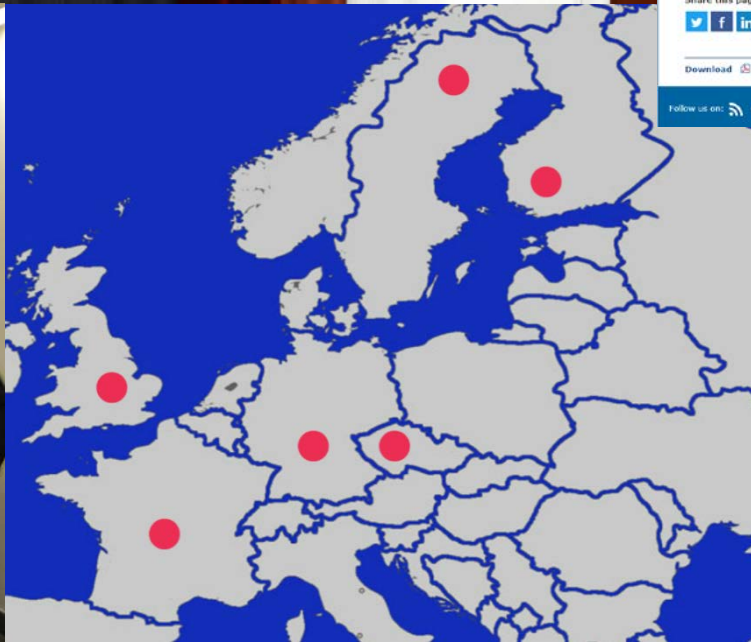
Download [PDF](#) [HTML](#) [XML](#)

Follow us on: [Facebook](#) [Twitter](#) [LinkedIn](#) [Google+](#)

Home > Solutions by Product Line > LMS > Engineering

European Industrial Doctorates

Marie Curie Actions



SIEMENS

LMS Engineering
 Innovative Technologies. Complex Product Design Expertise.

Discover LMS Engineering for complex product design

- Automotive
 - NVH and Acoustics Solutions
 - Customer Satisfaction Durability
 - Vehicle Energy Management
 - Controls Engineering
 - Driving Dynamics Solutions
- Aerospace
 - Mechanical Industries
 - Test and Simulation

LMS Engineering Services

LMS Engineering services comprises a global team of over 250 technical consultants available to help you optimize complex product design and address tough engineering challenges. Our expert team has over 30 years of experience helping companies like yours solve tough engineering challenges. Using multi-domain and mechatronic simulation solutions, our engineering consultants can help you achieve your complex product design goals. The broad multidisciplinary engineering experience of our LMS Engineering team ranges from noise, vibration and durability to system dynamics, vehicle handling, performance, emissions and safety.

Zhongzhe Dong • 2nd
 Research engineer chez Siemens PLM Software

Xueji Zhang • 2nd
 Research Engineer